

The following pages contain some of my initial design work on the CALIsys project.

You may need to zoom in to see the images at full detail (for some reason, they appear a bit choppy when the document is viewed at 100% magnification).

Also, keep in mind that these are rather simplistic images and were designed for presentation, not documentation (hence my explanation below :-).

Page 1. This shows the overall view of the project in its networked form. The server controlled all of the labs and related files that students could execute, and instructors could view, modify, etc.

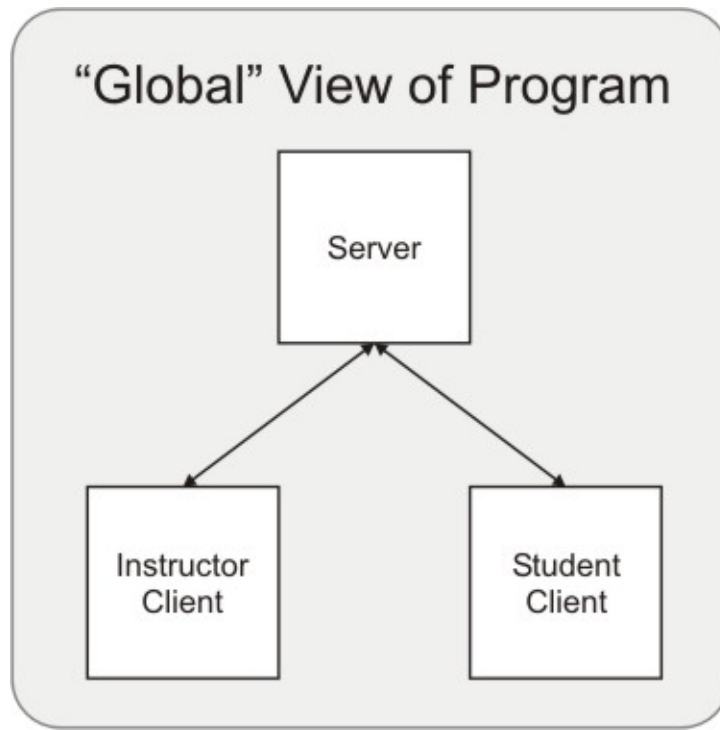
Page 2. This shows the actions available to instructors and their hierarchical organization. After login, an instructor could create or edit a test, equipment, labs, etc; if they chose to edit a test they could then add different types of questions, change a test's settings, etc.

Page 3. Since an instructor could access the same editing components from multiple areas (for example, could associate a help file with a piece of equipment, a lab, etc), I made this to illustrate the main interconnections.

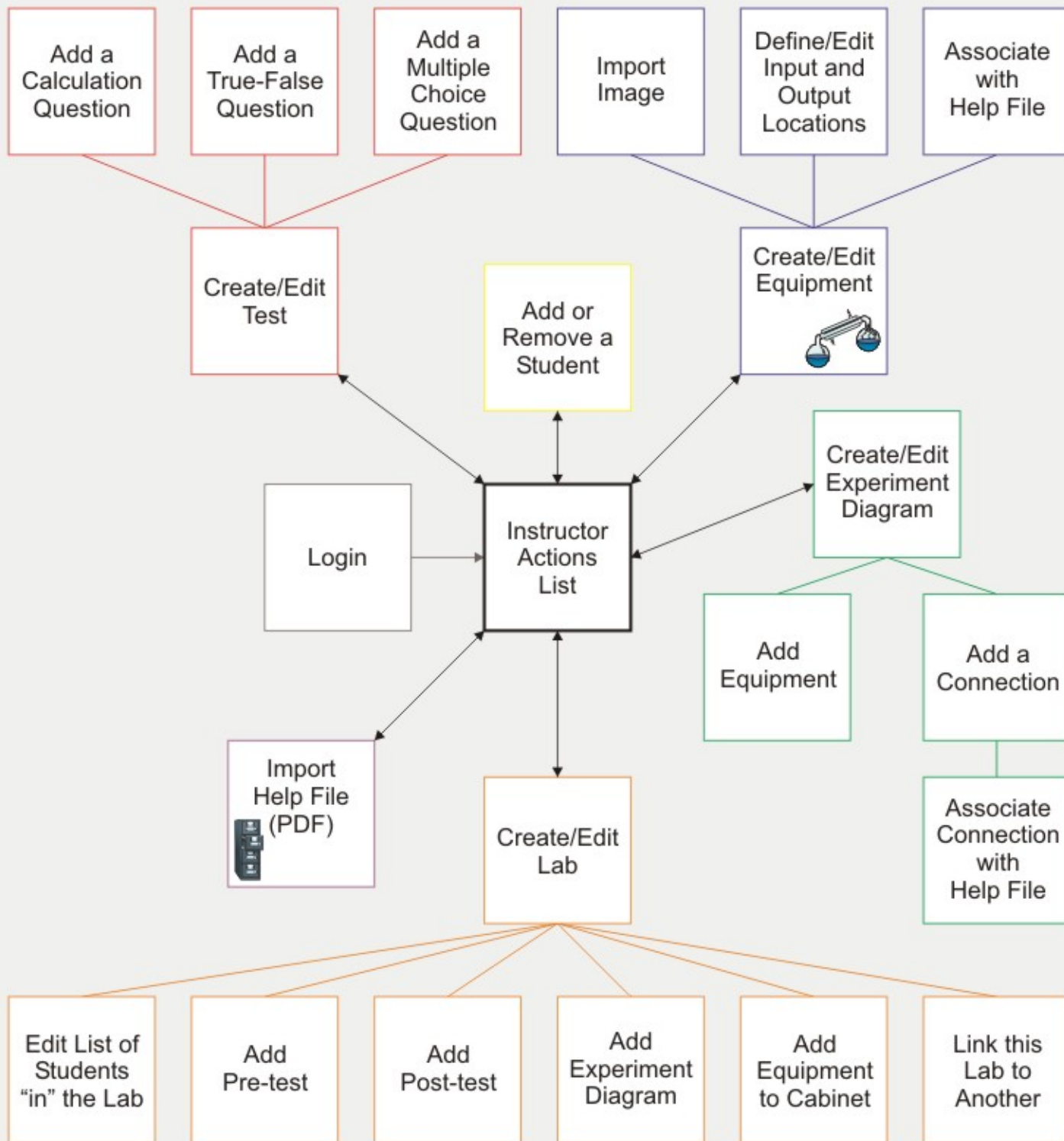
Page 4. This shows the actions available to students. After login, a student could select a lab they had already taken, or select a lab they had not completed and either begin or restart it. If an instructor made the option available, the student could redo a section they scored poorly on for partial credit (green lines) or quit out of the middle of a lab and come back later (red lines).

Page 5. This was my original design for how equipment and connections would be shown on the grid interface.

Page 6. This gave a more detailed, step-by-step view of how the student interface would work.

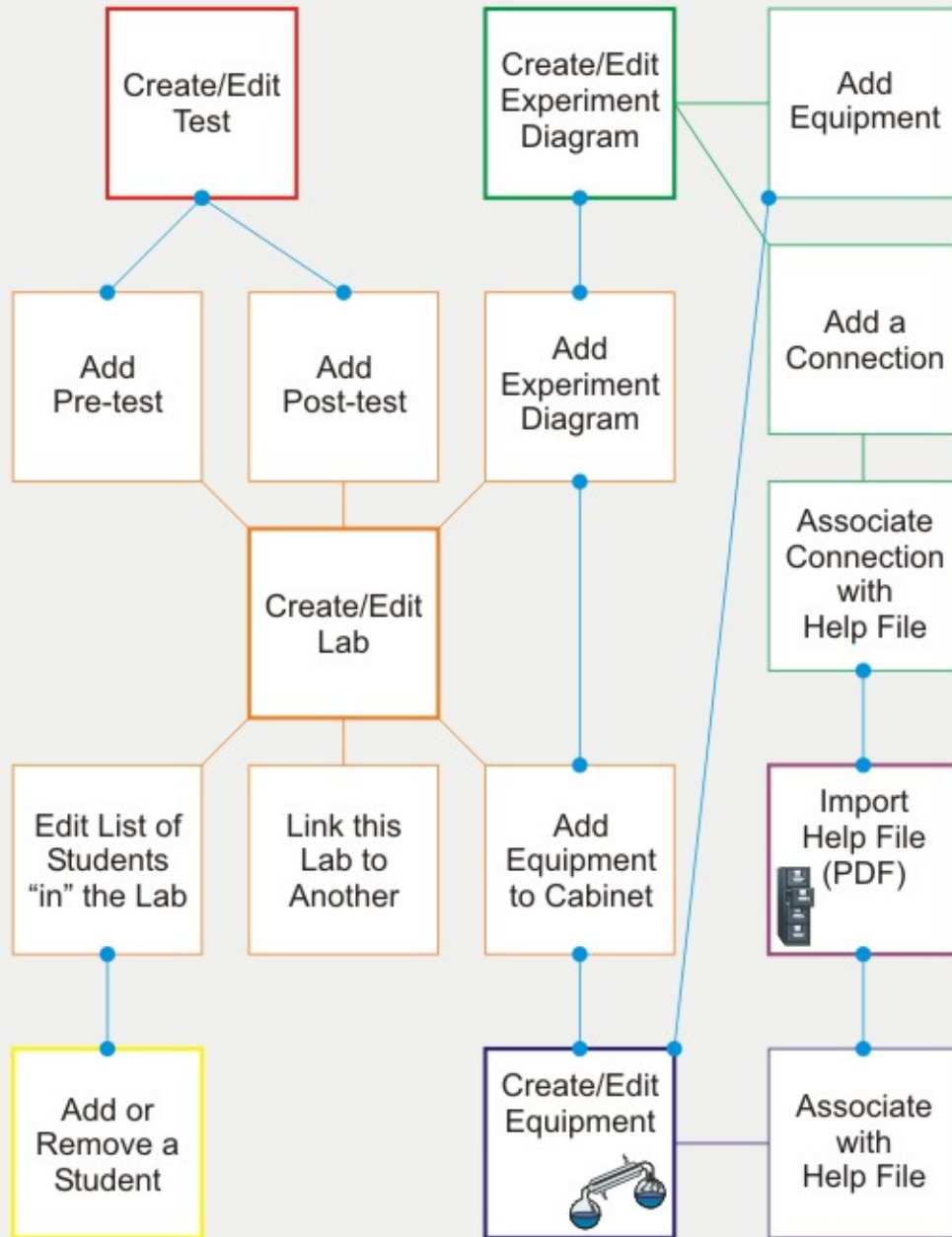


Instructor Client



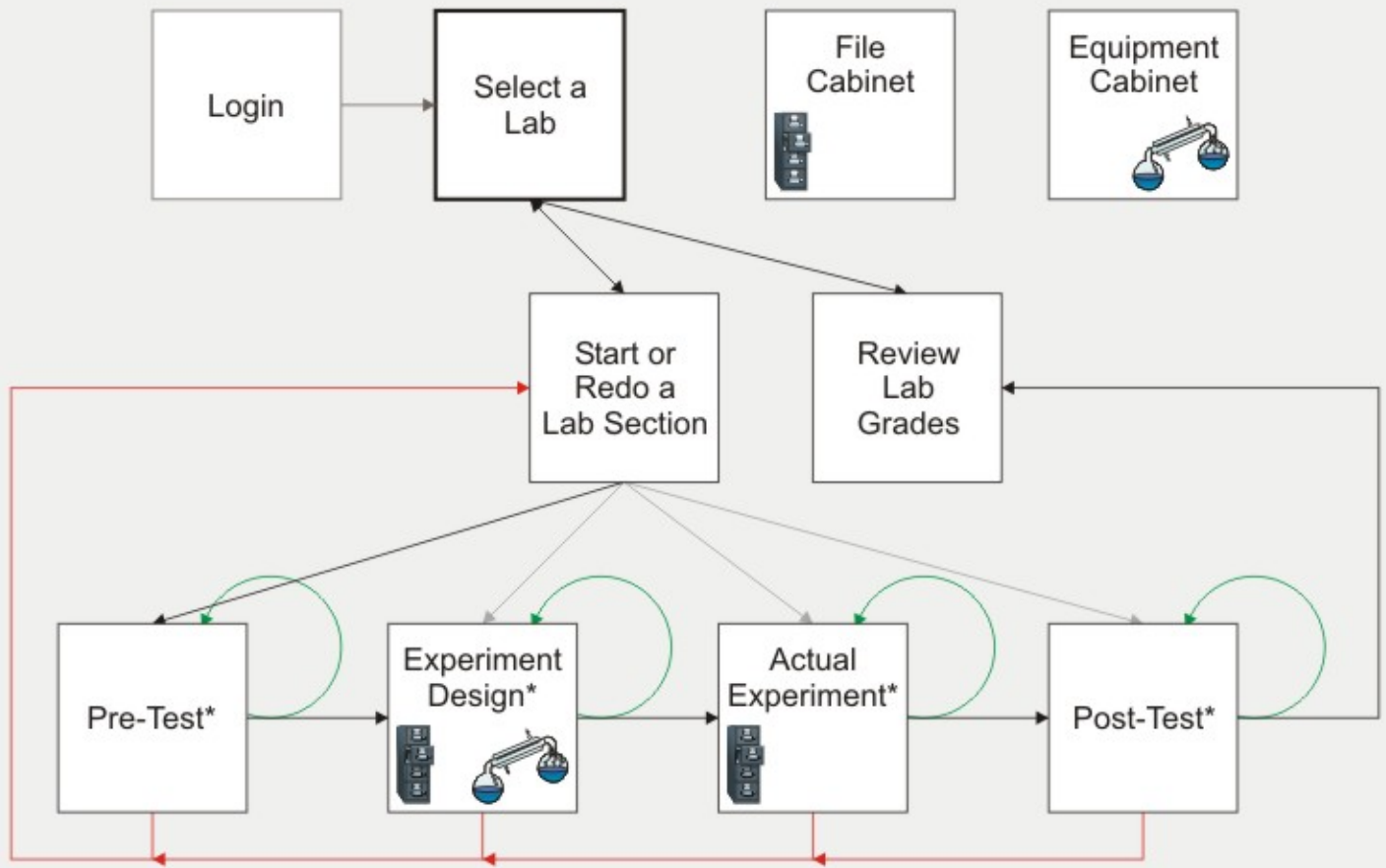
Instructor Client

– Interrelation of Components



Only those sub-components with links to other components are shown

Student Client



← - Cancel option.

↻ - Redo option, if available.

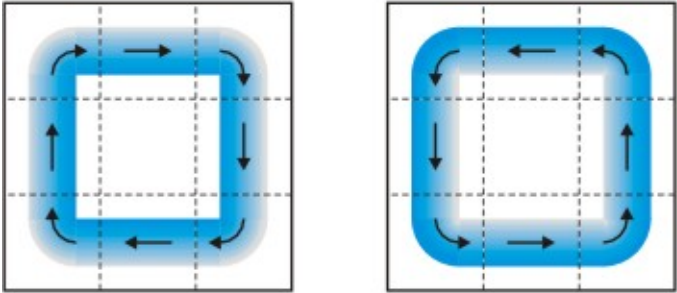
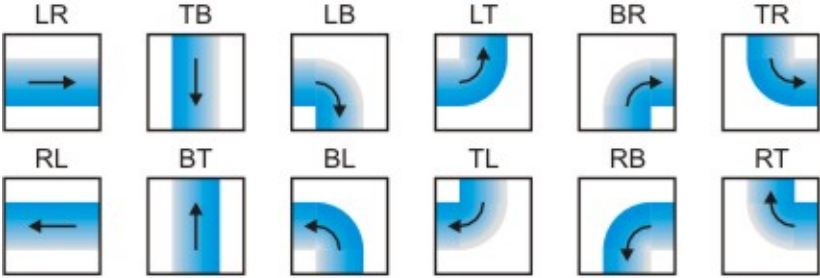
* - Available if the instructor has defined this module for the lab.

Grid-Based Diagrams

Connection Types



Connection Shapes



Equipment Example

